

# BLUEY



## Instruction Manual



## ROAD TRIP PLAY SET



**BBC**  
**STUDIOS**

BLUEY (word mark and character logos) are trade marks of Ludo Studio Pty Limited and are used under licence. BLUEY logo © Ludo Studio Pty Limited 2018. Licensed by BBC Studios. BBC is a trade mark of the British Broadcasting Corporation and is used under licence. BBC logo © BBC 1996

**VTech understands that a child's needs and abilities change as they grow and with that in mind we develop our toys to teach and entertain at just the right level...**

## **vtech** Baby

**Toys that will stimulate their interest in different textures, sounds and colours**

### **I am...**

...responding to colours, sounds and textures

...understanding cause and effect

...learning to touch, reach, grasp, sit-up, crawl and toddle

**Birth-36 months**



## **Pre-School**

**Interactive toys to develop their imagination and encourage language development**

### **I want...**

...to get ready for school by starting to learn the alphabet and counting

...my learning to be as fun, easy and exciting as can be

...to show my creativity with drawing and music so my whole brain develops

**3-6 years**



## **Electronic Learning Computers**

**Cool, aspirational and inspiring computers for curriculum related learning**

### **I need...**

...challenging activities that can keep pace with my growing mind

...intelligent technology that adapts to my level of learning

...National Curriculum based content to support what I'm learning at school

**4-10 years**

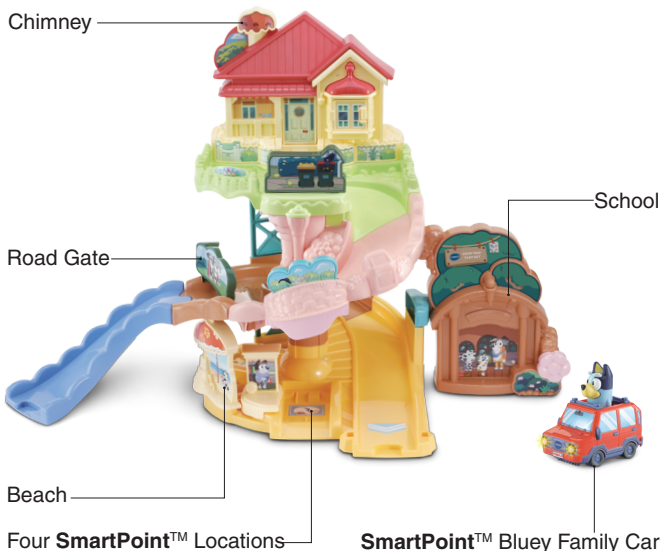


To learn more about this and other VTech® products, visit [www.vtech.co.uk](http://www.vtech.co.uk)

# INTRODUCTION

Thank you for purchasing the **VTech® Bluey Road Trip Play Set**.

Hop in the car with Bluey and take a wonderful ride around town! Push the chimney to open the door and launch the vehicle from the Heeler House to sneak past The Terriers and explore Bluey's school or the beach. Interactive **SmartPoint™** locations activate fun songs, sounds and phrases as your little one cruises around town with Bluey!



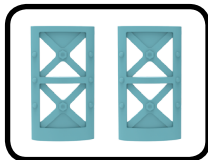
# INCLUDED IN THIS PACKAGE



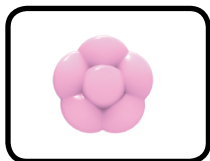
One **SmartPoint™**  
Bluey Family Car



One Dustbin Plate



Two Track Supports



One Flower



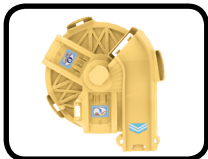
One Beach Wall



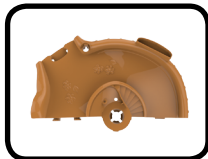
One Uncle Stripe Plate



One Ibis Plate



One Spiral Base 1



One Spiral Ramp 2



One Spiral Ramp 3

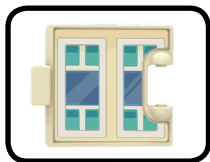


One Top Level Platform 4



One School Wall  
Support





One Window



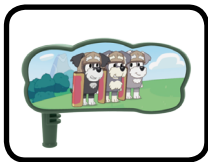
One School Wall



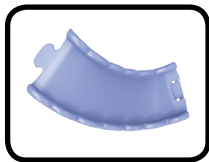
One Heeler House



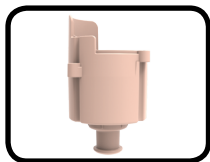
One **SmartPoint™**  
Launcher Track



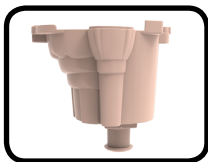
One Road Gate



One Slide Ramp



One Bracket 1



One Bracket 2



Eight Screws



Sticker Sheet

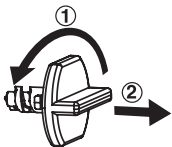
- One Quick Start Guide

**WARNING:**

All packing materials such as tape, plastic sheets, packaging locks, removable tags, cable ties, cords and packaging screws are not part of this toy, and should be discarded for your child's safety.

**NOTE:**

Please save this Instruction Manual as it contains important information.

**Unlock the Packaging Locks**

- ① Turn the packaging locks anticlockwise several times.
- ② Pull out and discard the packaging locks.

**CAUTION:****Adult assembly required.**

This package contains small screws. For your child's safety, do not let your child play with the toy until it is fully assembled.

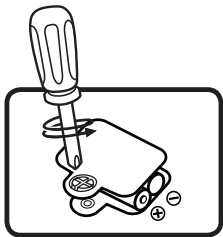
**WARNING:**

Adult assembly required for battery installation.  
Keep batteries out of reach of children.

# GETTING STARTED

## Battery Removal and Installation

1. Make sure the unit is turned **Off**.
2. Locate the battery cover located on the bottom of the Bluey Family Car. Use a screwdriver to loosen the screw and then open the battery cover.
3. Remove old batteries by pulling up on one end of each battery.
4. Install 2 new AAA (AM-4/LR03) batteries following the diagram inside the battery box (for best performance, alkaline batteries or fully charged Ni-MH rechargeable batteries are recommended).
5. Replace the battery cover and tighten the screw to secure.



## IMPORTANT: BATTERY INFORMATION

- Insert batteries with the correct polarity (+ and -).
- Do not mix old and new batteries.
- Do not mix alkaline, standard (carbon-zinc) or rechargeable batteries.
- Only batteries of the same or equivalent type as recommended are to be used.
- Do not short-circuit the supply terminals.
- Remove batteries during long periods of non-use.
- Remove exhausted batteries from the toy.
- Dispose of batteries safely. Do not dispose of batteries in fire.

## RECHARGEABLE BATTERIES

- Remove rechargeable batteries (if removable) from the toy before charging.
- Rechargeable batteries are only to be charged under adult supervision.
- Do not charge non-rechargeable batteries.

## Disposal of batteries and product



The crossed-out wheeled bin symbols on products and batteries, or on their respective packaging, indicates they must not be disposed of in domestic waste as they contain substances that can be damaging to the environment and human health.



The chemical symbols Hg, Cd or Pb, where marked, indicate that the battery contains more than the specified value of mercury (Hg), cadmium (Cd) or lead (Pb) set out in the Batteries and Accumulators Regulation.

The solid bar indicates that the product was placed on the market after 13th August, 2005.



Please dispose of your product and batteries responsibly.

In the UK, give this toy a second life by disposing of it at a small electricals collection point\* so all of its materials can be recycled.

Learn more at:

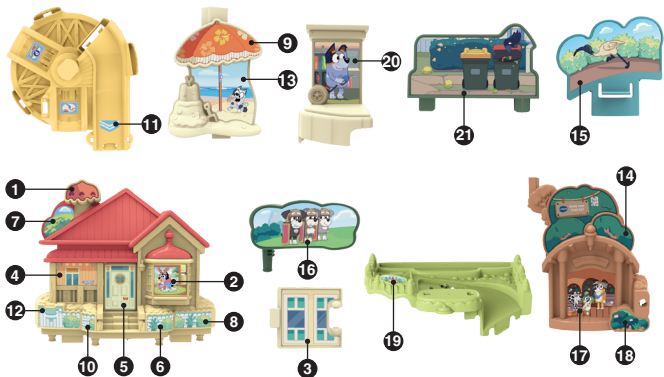
[www.vtech.co.uk/recycle](http://www.vtech.co.uk/recycle)

[www.vtech.com.au/sustainability](http://www.vtech.com.au/sustainability)

\* Visit [www.recyclenow.com](http://www.recyclenow.com) to see a list of collection points near you.

## LABEL APPLICATION

**Please stick the labels to the play set securely as indicated below:**



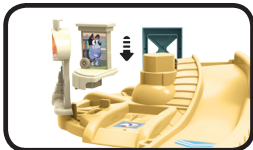
# ASSEMBLY INSTRUCTIONS

With the **Bluey Road Trip Play Set**, safety comes first. To ensure your child's safety, adult assembly is required.

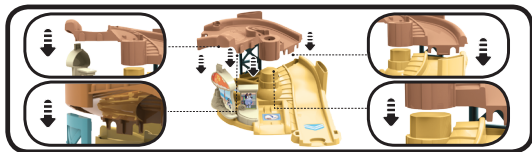
1. Locate the **Spiral Base 1** and insert one of the **Track Supports**, as shown below.



2. Insert the **Beach Wall** and the **Uncle Stripe Plate** into **Spiral Base 1**.



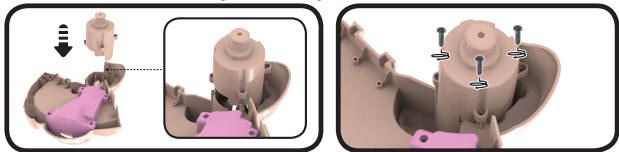
3. Place **Spiral Ramp 2** onto the centre pole of **Spiral Base 1**. Then, adjust **Spiral Ramp 2** so the slots fit snugly onto the **Beach Wall**, **Spiral Base 1**, and **Track Support**, as shown below.



4. Fasten the **School Wall Support** to the **School Wall** with two **Screws**, then insert into the slot on **Spiral Base 1**, and insert the **Flower** into the **School Wall**, as shown below.



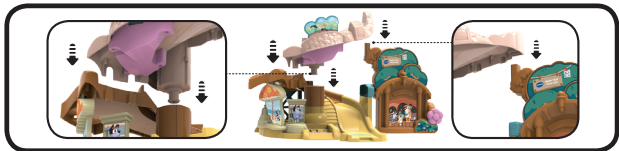
5. Insert **Bracket 1** into **Spiral Ramp 3** and fasten with three **Screws**.



6. Insert the **Ibis Plate** into **Spiral Ramp 3**. You will hear a “click” sound to indicate the pieces are secure.



7. Place **Spiral Ramp 3** over the centre pole of **Spiral Ramp 2**. Then, adjust **Spiral Ramp 3** so that the slots on the bottom fit snugly into the **School Wall** and the **Beach Wall**, as shown below. You will hear a “click” sound to indicate the pieces are secure.



8. Fasten **Bracket 2** to the **Top Level Platform 4** with three **Screws**, as shown below.



9. Connect the **Heeler House** to the **Top Level Platform 4**. You will hear a “click” sound to indicate the pieces are secure.



10. Insert the remaining **Track Support** into the slot on **Spiral Ramp 2**. Then, connect the bottom slots of the **Top Level Platform 4** to the **Track Support** and **Spiral Ramp 3**, as shown below. You will hear a “click” sound to indicate the pieces are secure.



11. Insert the **SmartPoint® Launcher Track**, the **Dustbin Plate** and the **Window** into the **Top Level Platform 4**, as shown below.

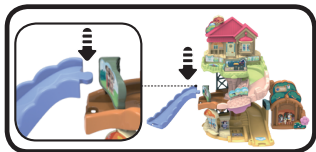




12. Insert the **Road Gate** into the slot on **Spiral Ramp 2**, as shown below. You will hear a “click” sound to indicate the pieces are secure.



13. Connect the **Slide Ramp** to **Spiral Ramp 2**, as shown below.



Once you've completed the above steps, you are ready to play! You can connect these pieces to other tracks (each sold separately).

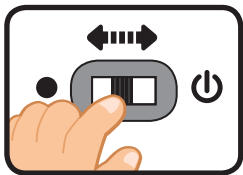


# PRODUCT FEATURES

## Bluey Family Car

### 1. On/Off Switch

To turn the unit **On**, slide the **On/Off Switch** to the **On** ☺ position. To turn the unit **Off**, slide the **On/Off Switch** to the **Off** ● position.



### 2. Automatic Shut-Off

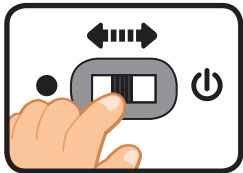
To preserve battery life, the **Bluey Family Car** will automatically power down after approximately 60 seconds without input. The unit can be turned **On** again by pressing the Bluey Character Button, pushing the **Bluey Family Car** quickly or triggering a **SmartPoint™** location.

**NOTE:** This vehicle is in Try-Me mode in the packaging and can not be turned on by pushing the **Bluey Family Car** quickly or triggering a **SmartPoint™** location. After opening the package, turn the **Bluey Family Car Off** and **On** again to proceed with normal play. If the unit repeatedly powers down while playing, we suggest changing the batteries.

## ACTIVITIES

### Bluey Family Car

1. Slide the **On/Off Switch On**. You will hear a song, fun phrases and sounds. The lights will flash with the sounds.



2. Press the **Bluey Character Button** to hear fun sounds, music and phrases. The lights will flash with the sounds. While a melody is playing, push the **Bluey Family Car** to add in fun sounds on top of the melody.



3. Push the **Bluey Family Car** quickly to hear fun sounds. The lights will flash with the sounds.



4. For added fun, the **Bluey Family Car** interacts with the **Bluey Road Trip Play Set**. Simply put the **Bluey Family Car** on one of the play set's four **SmartPoint™** locations to see the **Bluey Family Car's** lights flash and hear fun sounds, short tunes and phrases. The **Bluey Family Car** even interacts with other tracks (each sold separately).



# Bluey Road Trip Play Set

1. Place the **Bluey Family Car** or any **SmartPoint™** vehicle (each sold separately) on any of the play set's four **SmartPoint™** locations to trigger fun sounds, songs or phrases.
2. Put the **Bluey Family Car** on the **SmartPoint™ Launcher Track** on the **Top Platform**, then press the **Chimney** to launch the **Bluey Family Car** down the **Spiral Ramp**.
3. Move the **Road Gate** to let the **Bluey Family Car** pass through.



# MELODY LIST

1. Theme Tune
2. Takeaway
3. Road Trip
4. Beach
5. Camping
6. Markets

## SONGS

### Song 1

For the golden corn  
And the apples on the trees,  
For the golden butter  
And the honey from the bees,  
For fruits and nuts and berries  
That grow beside the way  
We praise our loving Mother Earth,  
And thank her every day.

## CARE & MAINTENANCE

1. Keep the unit clean by wiping it with a slightly damp cloth.
2. Keep the unit out of direct sunlight and away from any direct heat sources.
3. Remove the batteries if the unit will not be in use for an extended period of time.
4. Do not drop the unit on hard surfaces and do not expose the unit to moisture or water.

## TROUBLESHOOTING

If for some reason the unit stops working or malfunctions, please follow these steps:

1. Turn the unit **Off**.
2. Interrupt the power supply by removing the batteries.
3. Let the unit sit for a few minutes, then replace the batteries.
4. Turn the unit **On**. The unit should now be ready to play with again.
5. If the unit is not working properly, install a brand new set of batteries.

If the problem persists, please contact our Consumer Services Department, and a service representative will be happy to help you.

# CONSUMER SERVICES

Creating and developing **VTech®** products is accompanied by a responsibility that we at **VTech®** take very seriously. We make every effort to ensure the accuracy of the information, which forms the value of our products. However, errors sometimes can occur. It is important for you to know that we stand behind our products and encourage you to call our Consumer Services Department with any problems and/or suggestions that you might have. A service representative will be happy to help you.

## **UK Customers:**

Phone: 0330 678 0149 (from UK) or +44 330 678 0149 (outside UK)

Website: [www.vtech.co.uk/support](http://www.vtech.co.uk/support)

## **Australian Customers:**

Phone: 1800 862 155

Website: [support.vtech.com.au](http://support.vtech.com.au)

## **NZ Customers:**

Phone: 0800 400 785

Website: [support.vtech.com.au](http://support.vtech.com.au)

# PRODUCT WARRANTY/ CONSUMER GUARANTEES

## **UK Customers:**

Read our complete warranty policy online at [vtech.co.uk/warranty](http://vtech.co.uk/warranty).

## **Australian Customers:**

**VTECH ELECTRONICS (AUSTRALIA) PTY LIMITED –  
CONSUMER GUARANTEES**

Under the Australian Consumer Law, a number of consumer guarantees apply to goods and services supplied by VTech Electronics (Australia) Pty Limited. Please refer to [vtech.com.au/consumerguarantees](http://vtech.com.au/consumerguarantees) for further information.

**Visit our website for more  
information about our products,  
downloads, resources and more.**

***[www.vtech.co.uk](http://www.vtech.co.uk)***  
***[www.vtech.com.au](http://www.vtech.com.au)***



© 2025 VTech.  
All rights reserved.  
IM-584500-003  
Version:0